

cdw in North Kent : an evaluation

The North Kent Gateway Partnership has invited the University of Greenwich to carry out an evaluation of community development work in the North Kent Area (encompassing Dartford and Gravesham, Medway and Swale).

Local residents and project participants from a range of community development projects will be invited to participate in the study, as will project leads, community development workers and representatives from strategic agencies.



cdw in North Kent : an evaluation

For further information please consult the project website

www.nri.org/projects/cdw

or contact the project leader:

Valerie Nelson on

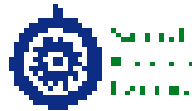
01634-883067, or v.j.nelson@gre.ac.uk

cdw project team

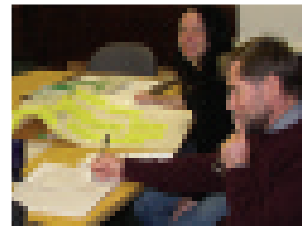
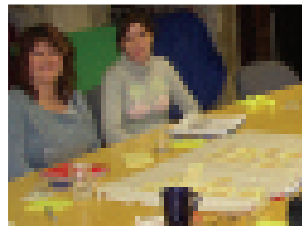
Valerie Nelson, Julian Quan,

Barry Pound, Mike Morris

and Pauline Forrester.

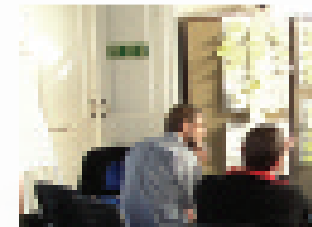


RESEARCH ENTERPRISE AND REGIONAL AFFAIRS OFFICE



cdw in North Kent : an evaluation

Study to be carried out by the University of Greenwich for the North Kent Gateway Partnership

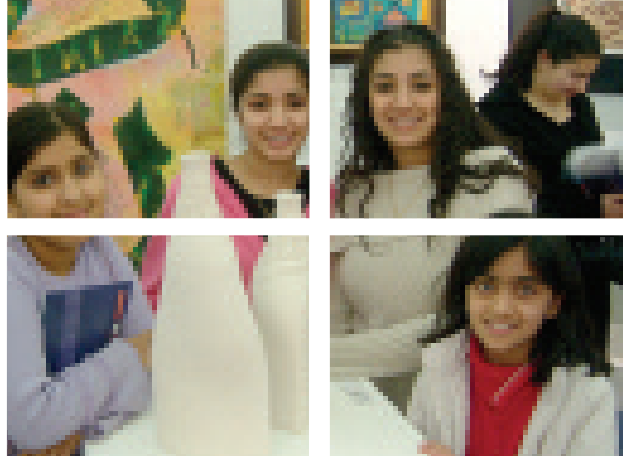


The **overall objective** is to undertake: a *participative* evaluation of the impact and methods of existing community development work (CDW) in North Kent.

The study will :

- investigate best practice and lessons learned
- review forward strategy in terms of delivery mechanisms and approaches to CDW
- develop a costed action plan

Given the scale of change envisaged for the sub-region, in terms of capital and physical investment, there is an urgent need to review sub-regional strategies for community development, capacity building and community involvement. This study comes at crucial time given that funding for community development from mainstream regeneration programmes, such as SRB and URBAN, is due to end in the next few years. Thus forward planning will be an important element of the evaluation to inform the future delivery of community development work in the North Kent Thames Gateway, including detailed business and action planning.



Key considerations for the study are:

- the evidence of need for ongoing community development work;
- the aims, values and expectations of community development work and the different methods, approaches and models for addressing these;
- the role of community development workers in meeting specific targets, particularly around the delivery of local regeneration frameworks and the scope for community development work to take on a geographic and/or thematic focus;
- the accountability of CD work, both to funding programmes, and to the communities themselves;
- the development of community development worker networking to share good practice and the strengthening of linkages/communication between CDWs on the ground and with local decision-making structures, (e.g. Local Strategic Partnerships);
- the role for community development work in bridging the gap between existing and new communities, including the potential to give CDW support to new communities to foster participation in community life and promote community cohesion.

Method

The study team will be organising a series of participatory workshops and meetings with a broad range of stakeholders (including policy-makers, project leaders, community development workers, local residents, project participants, representatives of community fora). The study begins in November 2004 and the final report will be submitted in March 2005.

For more information or to share your views on North Kent community development work please contact the project leader or visit the project website.

