



UNIVERSITY
of
GREENWICH

Integrated Master's in Biology

MBiol



Medway Campus

[gre.ac.uk/engsci](https://www.gre.ac.uk/engsci)

Why study this programme?

Are you interested in exploring any of the following?

- How do ecosystems work?
- How can we protect the environment and life on earth from the effects of climate change?
- What more can we learn about the processes that control life?
- How do genes control development?
- How does our immune system protect us from disease?
- What controls behaviour in plants, animals and humans?
- How do plant and animal communities interact?

Study our MBIol Integrated Master's in Biology and you will have the opportunity to learn from a team of international scientists working to provide answers to these questions.

You will gain a solid foundation in the key areas of biological science, before choosing option courses in order to explore your own scientific interests in addressing these issues. The programme combines theoretical and laboratory studies with hands-on experience in the laboratory and field.

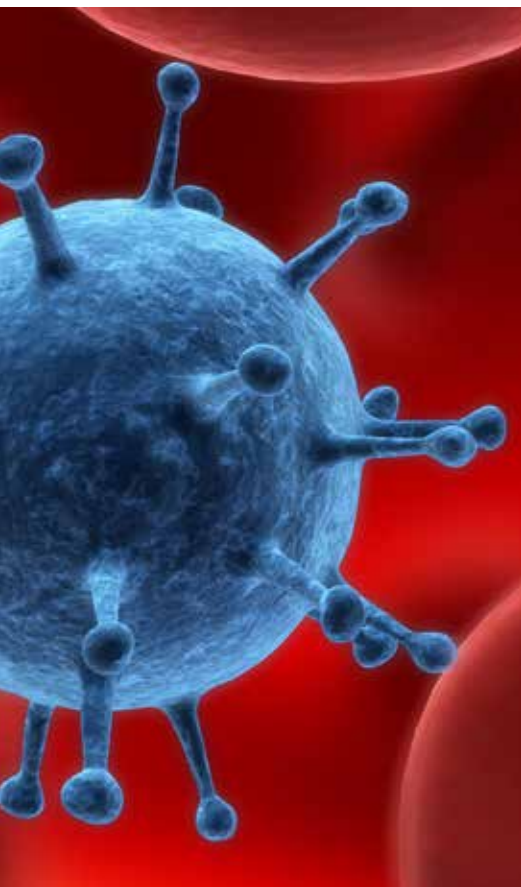
The programme team is a collaboration of research scientists from the Natural Resources Institute, the Department of Life & Sports Sciences and the Medway School of Pharmacy. They will share their invaluable field experience and support you in developing your strengths.

In the final stages of the programme, you will undertake a research project on a topic of your choice. You will study courses that will help you to develop your research and critical thinking skills, and have one-to-one support from a member of staff whose guidance and experience will enable you to explore your topic in considerable depth.

Why study with us?

The programme team is a combination of scientists working within the Natural Resources Institute (NRI), a unique multidisciplinary centre of excellence focused on global food security, sustainable development and poverty reduction, the Department of Life & Sports Sciences and the Medway School of Pharmacy.

All three are part of the university's Faculty of Engineering & Science and have reputations founded on excellence in teaching, training and research. The faculty is based on the university's Medway Campus located in



the rapidly developing area of Chatham Maritime in Kent. The campus is home to three universities, making it a vibrant place to work, study and relax. There are cafés, a pub, a gym, a sports hall and halls of residence on site.

The Students' Union University of Greenwich (www.suug.co.uk) and Greenwich and Kent Students' Unions Together (www.gkunions.co.uk) organise a variety of sports and social activities and run a number of student societies.

The campus is located near the historic towns of Rochester and Chatham and is less than an hour by train from central London.

What will you study?

Year 1

- Practical and Professional Skills – Life Science (15 credits)
- Basic Chemistry for Life Science (15 credits)
- Molecules and Life (15 credits)
- Fundamental Biology (15 credits)
- Comparative Physiology (15 credits)
- Molecular Biology (15 credits)
- Evolution and Biodiversity (15 credits)
- Ecological Fundamentals (15 credits)

Year 2

- Research and Professional Skills in Life Science (15 credits)
- Genetics (15 credits)
- Cell Biology and Immunity (15 credits)
- Biological Energetics (15 credits)
- Ecology and Ecosystems (15 credits)
- Microbiology and the Environment (15 credits)

- Two 15-credit options from: Physiological Systems and Regulation; Biology of Global Change; Animal Science and Environmental Physiology; Plant Science; Pharmacology (30 credits)

Year 3

- Project (30 credits)
- Planning for Personal and Professional Development (15 credits)
- Four or five options (each worth 15 credits unless otherwise indicated) from: Medical Microbiology; Cancer Biology and Therapeutics; Medical Biochemistry; Advanced and Clinical Immunology; Advanced Topics in Molecular Biology; Neuropharmacology (30); Renal and Cardiovascular Biology; Applied Plant Ecology; Animal Ecology; Conservation and the Environment; Insect Biology; Biotechnology for Crop Production (75 credits)

Year 4

- Project (60 credits)
- Advanced Research Methods, Ethics and Critical Thinking (15 credits)
- Three 15-credit options from: Advanced Neuroscience; Inflammation, Immune Disease and Allergy; Virology and Anti-Virus Therapy; Current Issues in Bioscience; Food Security; Integrated Pest Management; Climate Change and Ecological Footprinting; Agronomy and Crop Physiology; Special Topics in Ecology (45 credits)

Please note that it may not be possible to run all the option courses listed here in any given year.



Key facts

UCAS code: C100 M MBiol/IMB

Attendance: 4 years full-time

Entry requirements:

You should have:

320 UCAS points from relevant A-level or International Baccalaureate subjects (e.g. A-level biology), or equivalent qualifications.

- Prior learning and experience may be taken into account for applicants with significant work-based experience in related subjects.
- If you were educated in a language other than English and/or in a country where

English speakers are in the minority, you should have a minimum IELTS score of 6.5 (with a minimum of 5.5 in each skill) or an equivalent rating in another Secure English Language Test.

How to apply:

Home and EU students must apply through UCAS. Please carefully consider the programmes available and apply as early as possible. For further information and UCAS deadlines, please visit www.ucas.com.

International students should apply online at gre.ac.uk/apply. For further information, e-mail international@gre.ac.uk.

Career opportunities

Graduates from this programme will have the knowledge portfolio and skills needed to thrive in roles in industry, academia or the public sector, both in the UK and internationally.

Employment opportunities exist in the burgeoning biomedical science, biotechnology, environmental consultancy, agribusiness and sustainable development sectors.

Teaching and assessment

You will be taught through a combination of lectures, tutorials, online resources,

laboratory practicals, seminars, case studies and student-led presentations. A wide range of assessment methods will be used including presentations, field work reports, problem-solving exercises, assignments based on laboratory practical workshops and end-of-year exams.

Financial information

For information on tuition fees and financial help, please visit gre.ac.uk/finance.



Your next step

University Open Days are held several times a year. They include a programme of talks and offer you the opportunity to speak to staff and students. You may also be given a tour of the campus. Dates can be found at gre.ac.uk/opendays, or contact the Enquiry Unit or International Office for further information.



Why not sign up as a Greenwich VIP and create your own Greenwich web page, personalised to

your choice of programme and interests? Becoming a Greenwich VIP is a fast route to ordering our publications, booking a place on an Open Day and finding out more about the university. You can also receive text and e-mail alerts, and enter our online competitions. Please sign up at gre.ac.uk/study.

For further information

To find out more about studying at the University of Greenwich, please visit greenwich.ac.uk.

UK students

Enquiry Unit

Telephone: 020 8331 9000

Fax: 020 8331 8145

E-mail: courseinfo@gre.ac.uk

International/EU students

International Office

Telephone: +44 20 8331 8136

Fax: +44 20 8331 8625

E-mail: international@gre.ac.uk

Printed on recycled paper.



UNIVERSITY
of
GREENWICH

Natural Resources Institute

Department of

Life & Sports Sciences

Medway School of Pharmacy

University of Greenwich

Medway Campus

Central Avenue

Chatham Maritime

Kent ME4 4TB

**This document is available
in other formats on request**

University of Greenwich, a charity and company limited by guarantee, registered in England (reg. no. 986729). Registered office: Old Royal Naval College, Park Row, Greenwich, London SE10 9LS

Every effort has been made to ensure that this document is as accurate as possible. However, the university reserves the right to discontinue any class or programme, to alter any programme or to amend without notice any other information detailed here.